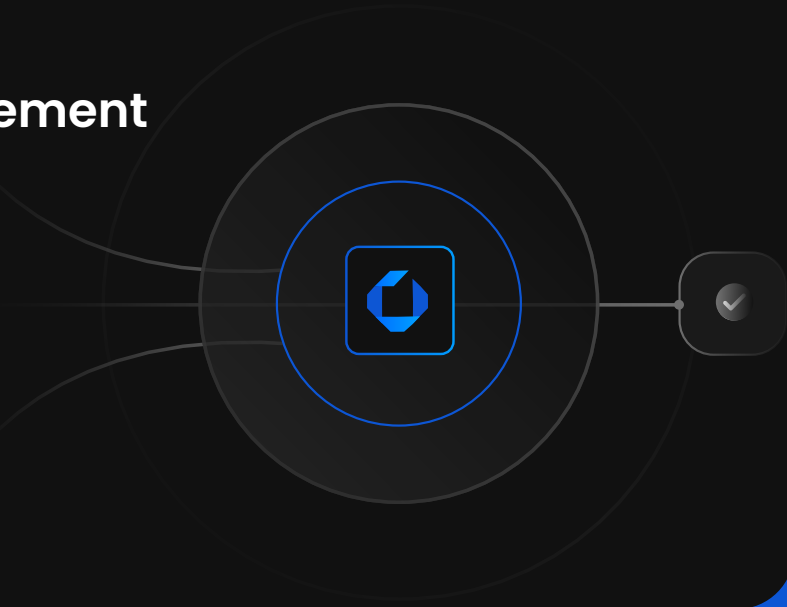


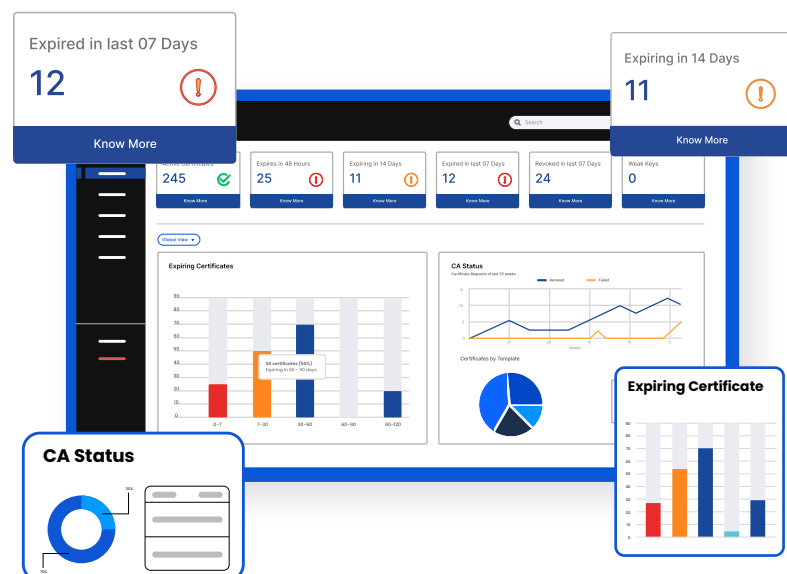
Effortless Certificate Management with Complete Automation

Outages, security risks, and endless manual tasks, certificate management shouldn't be this hard! CertSecure Manager streamlines certificate management, ensuring every certificate is tracked, renewed, and compliant, so your IT teams can focus on innovation, not firefighting.



Introduction

Every organization relies on digital certificates to secure its infrastructure. But outdated tools, manual processes, and lack of visibility lead to costly outages, compliance failures, and security risks. CertSecure Manager changes the game. Designed for the modern enterprise, it delivers full control, automation, and intelligence to keep your certificates secure, your operations uninterrupted, and your organization always one step ahead.



Key Features

- **Full Certificate Lifecycle Automation:** From discovery to renewal, automate every step and ensure certificates never expire unexpectedly.
- **Granular Role-Based Access:** Define policies and enforce strict access controls to minimize risk.
- **Centralized Visibility:** A single dashboard with 16 KPIs for tracking, managing, and reporting on certificates across all environments.
- **Smart Alerts & Remediation:** Proactive notifications and automated workflows prevent outages before they happen.
- **Seamless Integrations:** Works with public and private CAs, various load balancer and web servers, DevOps tools, and enterprise security solutions.
- **Flexible Deployment Options:** Cloud, on-premises, or hybrid – CertSecure Manager adapts to your infrastructure.

With CertSecure Manager, you can:

- Eliminate certificate outages that bring critical systems to a halt
- Automate renewals and provisioning to save time and reduce human error
- Ensure compliance with regulatory frameworks and internal security policies
- Gain complete visibility into every certificate across all environments
- Secure DevOps and cloud initiatives with fast, policy-driven certificate issuance
- Integrate effortlessly with existing security, cloud, and IT infrastructure

Flexible Deployment Options

CertSecure Manager adapts to your IT environment, providing the flexibility to deploy in the way that best fits your security, compliance, and operational requirements.



On-Premises

Opt for a self-hosted setup to retain maximum oversight, with deployment customized to align with your internal systems and policies.



Cloud-Based

Tap into the agility and scalability of cloud environments by integrating CertSecure Manager with your preferred cloud platform.



SaaS

Simplify your certificate management journey with a fully managed, cloud-native service that reduces operational overhead.



Hybrid

Achieve the best of both worlds by blending on-premises infrastructure with cloud capabilities for a versatile and resilient deployment.

Discover the CertSecure Manager Difference

CertSecure Manager brings clarity, control, and confidence while streamlining management, boosting security, and powering automation across every environment, from on-prem to multi-cloud.

Preventing Costly Outages: Say goodbye to expired certificates causing downtime and disruption.

Securing Hybrid, On-Prem, & Multi-Cloud Environments: Manage certificates across on-prem, cloud, and hybrid infrastructures.

Automation of your Endpoint Certificates: Automate the renewal and deployment of certificates on your endpoints such as load balancers and web servers.

Enhancing DevOps & CI/CD Pipelines: Speed up deployments with automated, policy-driven certificate issuance.

Meeting Compliance & Audit Requirements: Simplify audits with detailed reports and continuous compliance monitoring.

Enabling Zero Trust Security: Strengthen authentication and encryption across your enterprise.

The CertSecure Manager Advantage

Legacy certificate management solutions create silos, slow down teams, and leave organizations vulnerable. CertSecure Manager is built to meet the speed and complexity of modern enterprises.

- Zero-downtime, zero-disruption certificate management that keeps your business running
- Built-in intelligence and automation to streamline operations and eliminate manual effort
- Enterprise-grade security and compliance to meet the most stringent requirements
- Scalability without limits, manage thousands or millions of certificates with ease
- A future-ready solution designed to adapt to rising security challenges



Get in Touch

Don't let certificate chaos slow you down. CertSecure Manager supports your team every step of the way to take control, eliminate risk, and ensure security without compromise. Drop us an email at info@encryptionconsulting.com or call us at +1- 469-815-4136 to learn more about CertSecure Manager!